



COUNTY OF MARIN

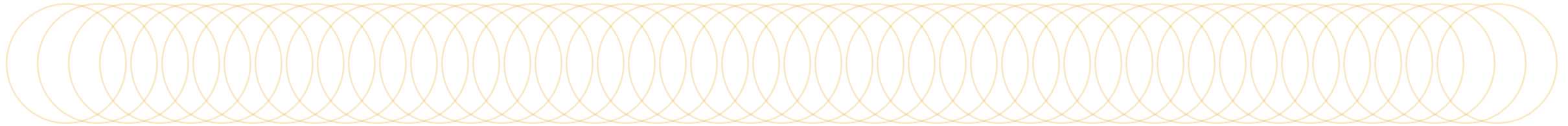
invites your interest in the position of

Principal Civil Engineer (Traffic and Transportation Planning)



www.marincounty.org

The mission of the Marin County Department of Public Works is to provide the community with quality services, maintain and improve public infrastructure and facilities, and support the preservation of Marin's unsurpassed beauty.



Exciting Career Opportunity to join a Dynamic Team!

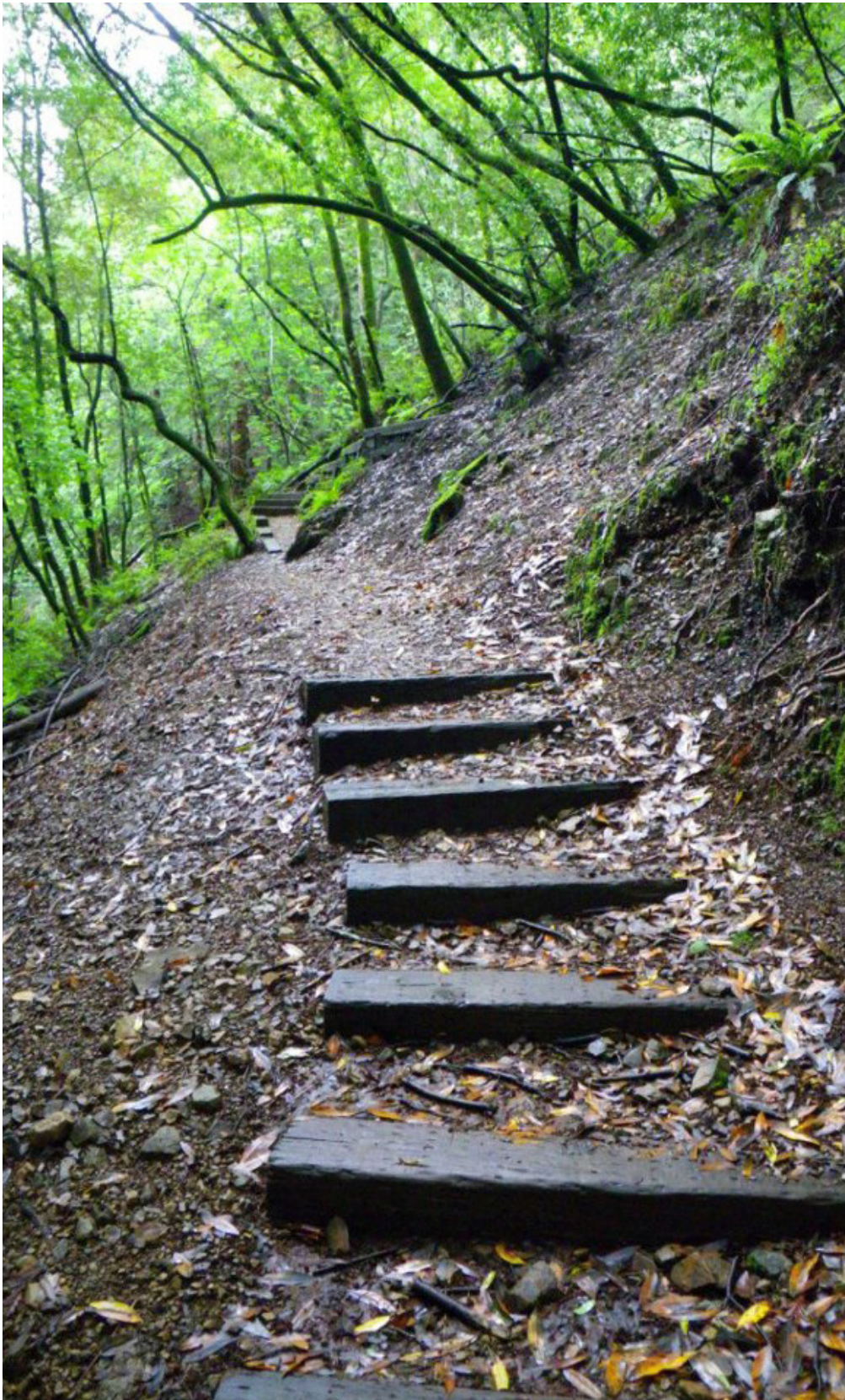
A statewide and national search is currently underway to attract a highly experienced transportation professional wishing to join a robust and high-performance organization. The Principal Civil Engineer serves as the County Traffic Engineer and division head, assigned as the manager in-charge dealing with transportation and traffic related projects and operations.

The Public Works Department is committed to complete streets, transit-oriented development, and promoting walking and bicycle usage to mitigate a variety of transportation related challenges, as well as providing a safe environment and continuing to enhance the quality of life for residents and visitors. Adapting best practices and incorporating innovative transportation solutions and policies are also important responsibilities of this position. Areas of responsibilities include traffic signals and timing, traffic calming, curbs, striping, and assessment of traffic safety in the unincorporated areas of the County. AB 43 will present opportunities to improve safety but will provide some challenges in the implementation.

At the core of the County of Marin, across all departments, is a commitment to be inclusive, innovative and to continue to grow a culture of openness, transparency and ethical leadership. Teamwork and collaboration are also of vital importance in this new organizational structure. These highly regarded values provide a foundation for more frequent and meaningful dialogue with external stakeholders as well as operational units, divisions, and other departments on a county-wide basis. Top candidates for this position will be comfortable addressing challenging issues that require problem-solving, resolution, and compromise to move the Traffic and Transportation Planning Division forward.

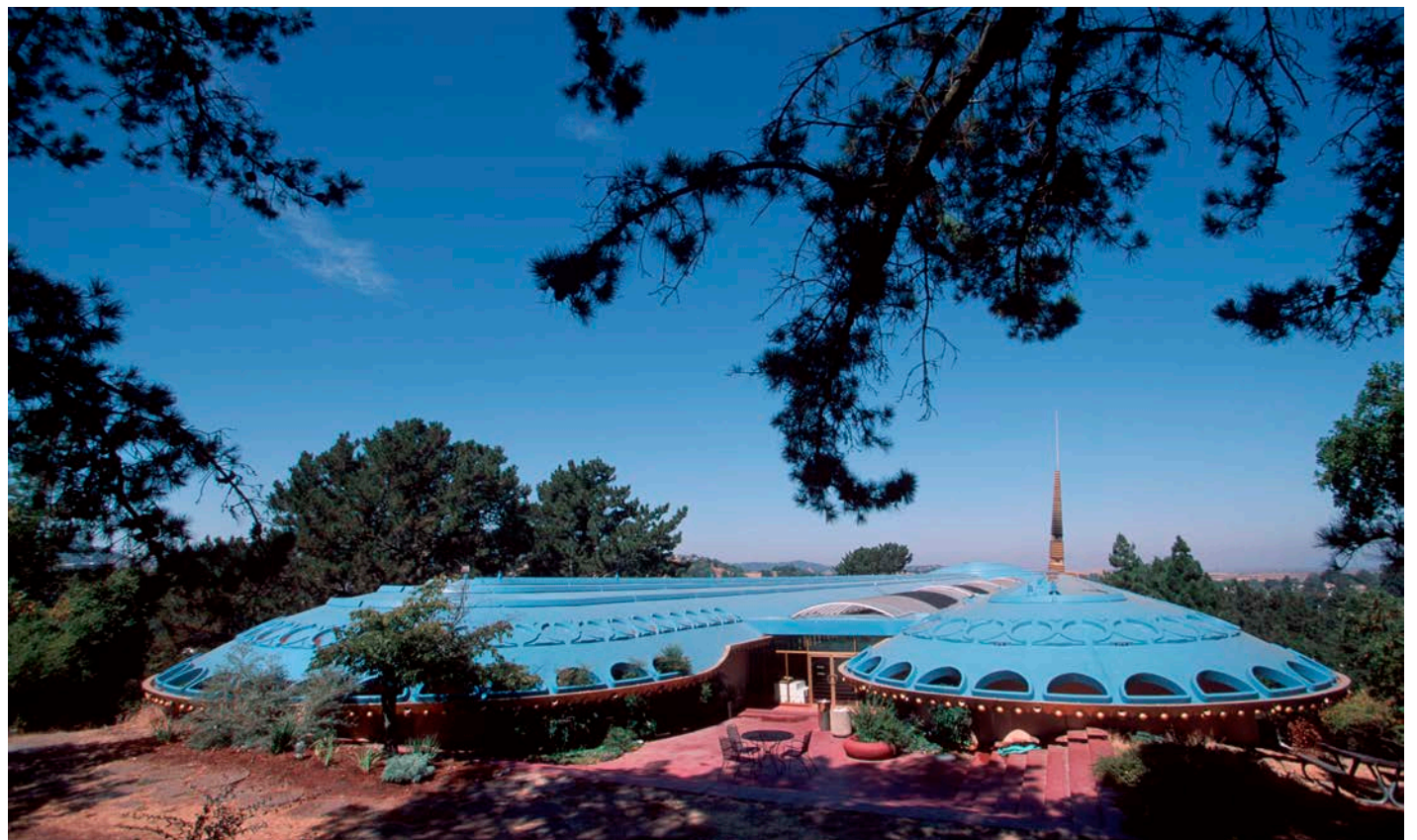
To learn more go to: Department of Public Works (www.marincounty.org/depts/pw) and [FY2022-24 County Budget](#).

Live, Work, and Enjoy the Outdoors in Picturesque Marin County



Marin County, located in the hills northwest of San Francisco across the Golden Gate Bridge, is a beautiful, temperate refuge from the more urbanized regions of the Bay Area. With a total population of about 260,000, Marin County residents enjoy a high quality of life in one of the most spectacular metropolitan areas of the world. Marin County has a diversified economic base, including a mix of insurance, medical, pharmaceutical, technology, financial, and retail employers. George Lucas' Skywalker Ranch is also located in Marin County as well as a few subsidiaries of Lucasfilm.

Outdoor activities are plentiful with access to the bay, the ocean, hiking trails, road and mountain biking, vineyards in Napa and Sonoma, wildlife viewing, agritourism, and the Muir Woods National Monument. Marin County is the birthplace of mountain biking. The Marin County Civic Center is a complete campus designed by Frank Lloyd Wright, "the greatest American Architect of all time."





County Government

Marin County is a General Law County. The County is governed by five members of the Board of Supervisors, each of whom represents one of the five voting districts of the County. The County employs over 2,200 employees in 22 agencies. The Board's priorities for the future include (1) preserving and increasing affordable housing and addressing homelessness, (2) building a racially equitable community, (3) reducing carbon emissions and adapting to climate change, (4) enhancing disaster preparedness, and (5) investing in county infrastructure. The total budget for all funds is \$717 million.

Eleven incorporated cities and towns are located within Marin County, including the county seat of San Rafael. The central and most visible location of Marin County government is the Marin County Civic Center in San Rafael, which was designed by Frank Lloyd Wright and is on the National Register of Historic Places.

This diverse organization strives to uphold a set of core values: respect, trust, integrity, diversity, equity, excellence, accountability, innovation, and collaboration. These values help to maintain and enhance public trust and help achieve high quality service outcomes. The County is committed to being a well-managed organization that relies on the talents of its workforce to succeed.

Important for candidates to know, the County of Marin is a high-performance organization and has embarked on an organizational performance management program designed to foster a culture of continuous improvement and learning. This innovative approach ("Marin Compass") is a county-wide effort to align all county departments to at least one of three county strategies:

*Healthy
Communities*

*Safe
Communities*

*Sustainable
Communities*

Department of Public Works

The Department of Public Works consists of 21 Divisions, which administer a variety of programs including capital improvement, disability access, and engineering projects; maintenance of county roads and buildings, communications facilities, and vehicles; flood control, watershed planning, land development, and permitting; as well as general service functions such as accounting and administration. Due to the topography of the region, flood control is of critical importance and the Director acting as the District Engineer is often involved in the multiple flood control districts that exist county-wide. Additionally, the Department also provides the county-wide purchasing function.



Oversight and Responsibilities of the Principal Civil Engineer (Traffic and Transportation Planning)

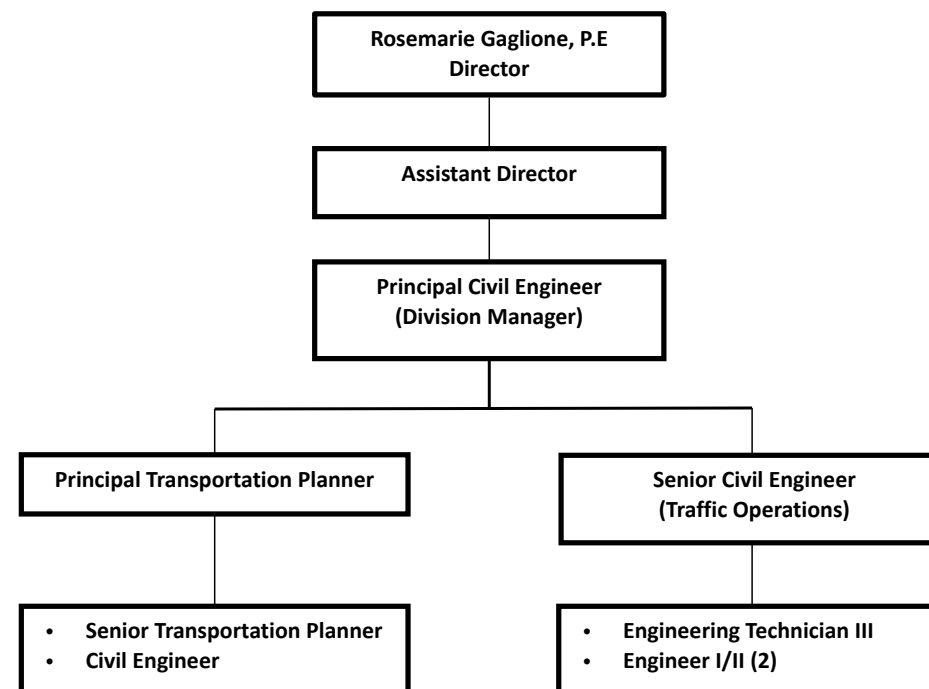
This position reports to an Assistant Director of Public Works. The position is the Principal Civil Engineer classification that functions as the Division Manager for the Traffic and Transportation Planning Division. This position also serves as the County's Traffic Engineer. This position manages a staff of 7.

The primary focus of this position is to enhance transportation methods and traffic safety for the County. The Principal Civil Engineer leads this county-wide effort related to many transportation and capital projects. A primary focus is to deliver on the County's commitment to increase the abundance of pedestrian and bicycle paths. Implementation of AB 43 will be critical in the next few years. In addition, responsibilities include a variety of county-wide and neighborhood improvements in the unincorporated areas of Marin, including traffic calming measures, maintaining/replacing traffic signal components, updating traffic signal timing, maintaining street markings and signs, conducting traffic and parking studies, improving traffic conditions, and responding to resident concerns regarding traffic.

The position regularly interacts with surrounding local government agencies, community and stakeholder groups, and is often responsible for contractors and consultants.

The Principal Civil Engineer is also responsible for developing and administering operating and capital budgets, administering contracts, procurement, grant management (i.e., highway safety improvement grants), and interfacing with Transportation Authority of Marin ("Tam") and Metropolitan Transportation Commission ("MTC").

MARIN COUNTY DEPARTMENT OF PUBLIC WORKS TRAFFIC AND TRANSPORTATION PLANNING



Oversight and Responsibilities of the Principal Civil Engineer (Traffic and Transportation Planning) *continued*

This position is also required to provide support to the Director of Public Works on presentations to the Board of Supervisors and various transportation and traffic engineering related issues.

Examples of the broader responsibilities for this position include:

- Plan, organize, manage, and coordinate the activities of the Traffic and Transportation Planning Division; establish, implement, and evaluate division goals, priorities, objectives, and work processes; coordinate division activities with those of other divisions, departments, agencies, and organizations to ensure effective cooperation on all governmental levels; and ensure division activities comply with County, State, and Federal codes, regulations, and guidelines.
- Select, train, assign, supervise, and evaluate supervisors, professional, technical, and other assigned staff.
- Confer with and serve as a resource to staff and other agencies on technical subjects.
- Direct the preparation of project plans, specifications, and related data; advise staff on policy and procedural matters related to the work.
- Negotiate and prepare contracts.
- Prepare and approve documents for projects such as bid proposals.
- Review consultants' work for contract conformance and assist County Counsel staff in resolving contract disputes.
- Inspect and monitor progress of projects to ensure compliance with plans and specifications; write, review, and approve progress reports.
- Prepare, justify, and manage annual and long-range budgets for the Traffic and Transportation Planning Division; review, authorize, and control expenditures.
- Make presentations to the Board of Supervisors, various boards and commissions, and prospective funding agencies on such matters as budget issues and project proposals.
- Review and analyze legislative impact on existing regulations and requirements.
- Serve as witness in court, as needed.

Attributes of the Ideal Candidate

In addition to being ethical, well qualified, and experienced, the new Principal Civil Engineer (Traffic and Transportation Planning) will be leader with a strategic approach to managing in a robust and vibrant environment. Fundamental will be a strong desire to be part of a larger team effort and work collaboratively. These attributes are of particular importance as the Public Works Department addresses all of the typical public works related issues as well as the emphasis on proactively and aggressively embracing challenges.

Candidates for consideration will be well served in this culture by having strong interpersonal skills that support frequent and effective communication. The top contender for this specific position will not only have the transportation related skills but will also have a leadership style that is empowering, respectful, and is rooted in genuine concern for others. This ideal candidate will also appreciate the varied skills and contributions of the broad spectrum of individuals in the organization. Importantly, this top candidate will also have a spirit of innovation and be adept at quickly bringing solutions for consideration and implementation.

Highly regarded will be the ability for this top candidate to embrace and embody the County's focus on diversity, equity, inclusion, and belonging and have demonstrated this throughout their career history.

The ideal candidate will also be adept at managing in a fast-paced and dynamic environment. Both diplomatic and decisive, this Division Head will work with a sense of urgency and timeliness, keeping focused on progress and continued improvement to the vast transportation needs of Marin County.

Qualifications – Education, Experience, and License

Bachelor's degree is not required. Applicants will be screened on the basis of the following requirements:

Experience: Minimum of five years of increasingly responsible professional engineering experience. At least two years of the required professional experience must have included functioning in a supervising capacity.

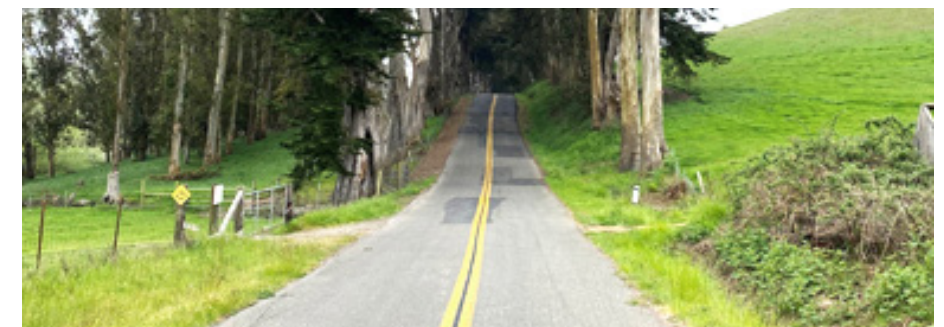
License: Possession of registration as a professional engineer (civil) in the State of California is required at time of submittal. Registration as a Traffic Engineer (TE) is preferred.

➤ **For out-of-state candidates**, an exception may be granted for highly qualified individuals in this specific career field if they are currently holding an active out-of-state PE (civil) license. Traffic Engineering (TE) license is not required but is desirable. This will allow the selected candidate to obtain the PE (civil) equivalent license in California as a condition of continued employment with the County. **PE license must be awarded prior to the first anniversary date of employment.** No extensions will be granted.

Compensation and Benefits

The salary range for this position is \$147,160 to \$178,901. Placement within the range will be based on career experience and overall qualifications of the selected candidate.

The County of Marin offers a full benefits package including Medical, Dental, Vision, Pension/Retirement, deferred compensation, and flexible spending accounts. Retirement is offered through Marin County Employees' Retirement Association (MCERA) at www.mcera.org.



Application and Selection Procedure

This position is open until filled. To be considered for this exceptional career opportunity, **apply immediately** by submitting a resume and cover letter. Comprehensive resume should reflect years and months of employment, beginning/ending dates, and specific highlights of transportation related projects to align with the oversight of the Traffic and Transportation Planning Division.

Every effort will be made to accommodate a mutually agreeable start date as soon as possible.

Submit requested material to: apply@ralphandersen.com.

For further information, contact Project Director, Ms. Heather Renschler at (916) 630-4900 or heather@ralphandersen.com.

Website: www.ralphandersen.com.

Responses to written supplemental questions may also be required as well as submittal of sample work products. Additionally, due to the heightened need for strong public presentation skills, presentation done via screen-sharing may be part of the selection process. Finalist interviews will include one-on-one interview with the Director of Public Works, Rosemarie Gaglione, and other key leadership in the Public Works Department.

An appointment will be made following comprehensive reference and background checks.





Marin County is an Equal Opportunity Employer and values diversity at all levels of the organization.

Learn More

[County of Marin Website](#)

[Public Works Department](#)

[LinkedIn](#) | [Facebook](#) | [Twitter](#)

