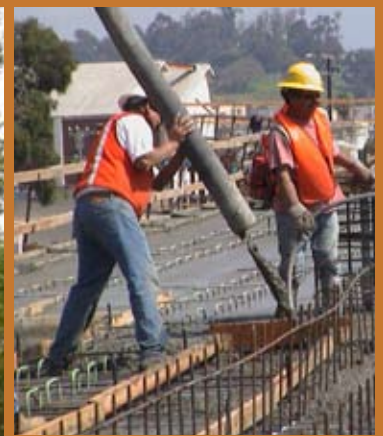


Metro Gold Line Foothill Extension Construction Authority



Invites Applications for the Position of

Chief Project Officer



Recruitment Services Provided by
Ralph Andersen & Associates

The Opportunity

The Metro Gold Line Foothill Extension Construction Authority is conducting a regional search for the position of Chief Project Officer. Ideal candidates will be highly skilled project managers with a proven track record of delivering on time and within budget. Serving as the Chief Project Officer, this position will be responsible for the successful construction of a light rail extension from its Phase 1 terminus in East Pasadena through the Cities of Arcadia, Monrovia, Duarte, Irwindale, Azusa, Glendora, San Dimas, La Verne, Pomona, Claremont and Montclair.

The project has an anticipated completion date of 2014. This high profile executive position is responsible for the overall management of a \$700 million dollar light rail construction project.

The Community – County of Los Angeles

Los Angeles County, with a population of approximately 10 million people, has more residents than any county in the nation and is exceeded by only eight states. It is the 17th largest economy in the world, and serves as the nation's top international trade center, second largest manufacturing center, and aerospace research/development capital.

The County boasts 63,000 acres of parks, lakes, trails, natural areas, and gardens; the world's largest and most modern small craft harbor; and 31 miles of beaches along the coastline. Los Angeles County is truly a remarkable place to live and work. The County offers world-class cultural facilities such as the Music Center (Walt Disney Concert Hall, Dorothy Chandler Pavilion, Mark Taper Forum, and Ahmanson Theatre); Museum of Art; Museum of Natural History, (including the Page Museum at the La Brea Tar Pits and the William S. Hart Museum); Hollywood Bowl; and the John Anson Ford Theatre. Private facilities include more than 300 museums. The possibilities for diverse cultural activities, accommodations, sight-seeing, entertainment, shopping, attractions, and natural beauty are plentiful.

The Authority

The Metro Gold Line Construction Authority is an independent planning and construction agency created in 1998 by the California State Legislature, SB 1847. Its sole purpose was to immediately resume design, contracting and construction of the Los Angeles to Pasadena Metro Gold Line (formerly the Pasadena Blue Line) which had been suspended by the Los Angeles Metropolitan Transportation Authority (Metro) in the same year. The newly formed construction authority completed its charge in just under three years when the 13.7 mile line opened in 2003, on time and under budget.

The Foothill Extension is 24 miles long and travels through 11 cities in addition to current operations in Los Angeles, South Pasadena, and Pasadena. The proposed project will be constructed in two segments: Phase 2, from East Pasadena through Azusa, is projected to open in 2011/2012; Phase 2B, from Glendora to Montclair, is projected to open in 2014.



The Position

The Chief Project Officer is a member of the senior management team and reports to the Chief Executive Officer, Habib Balian. This at-will position manages a four person team and is responsible for the planning, budgeting, scheduling, engineering design, contracting, and construction management of a design-build light rail project. The ability to manage a high-level, multi-disciplined technical staff; the design build contractor; and value engineering claims, design and construction management consultants, is a requirement of the Chief Project Officer. The implementation of the appropriate project controls, construction safety programs and environmental mitigation are some of the responsibilities of the Chief Project Officer.

The Chief Project Officer will be expected to interact with the Authority Board, represent the Chief Executive Officer for all engineering and construction matters, and serve as the primary technical resource to all divisions and units within the Authority. Working effectively with other transportation agencies, as well as both public and private sector interest groups, is a position requirement.

The Ideal Candidate

The ideal candidate for the position of Chief Project Officer should be an experienced light rail construction engineer, with a proven record of accomplishment. The successful candidate will have a broad background in engineering and project management. He or She will be knowledgeable about contemporary principles, practices, and methods of engineering, with particular reference to light rail construction engineering management, and engineering procedures and activities. The ideal candidate will have capabilities as a leader as well as a manager, and will be comfortable in a team-oriented working environment. He or She will have strengths as a negotiator and consensus-builder, and will have an open and accessible management style.

The Chief Project Officer must be an effective communicator with excellent negotiating and networking skills combined with an aggressive approach to light rail construction and engineering. Specifically, the new Chief Project Officer must be recognized as having the ability to provide the Authority with the qualities and attributes listed below, and must have achieved a notable level of success in the area of light rail construction engineering management.

Exceptional leadership skills

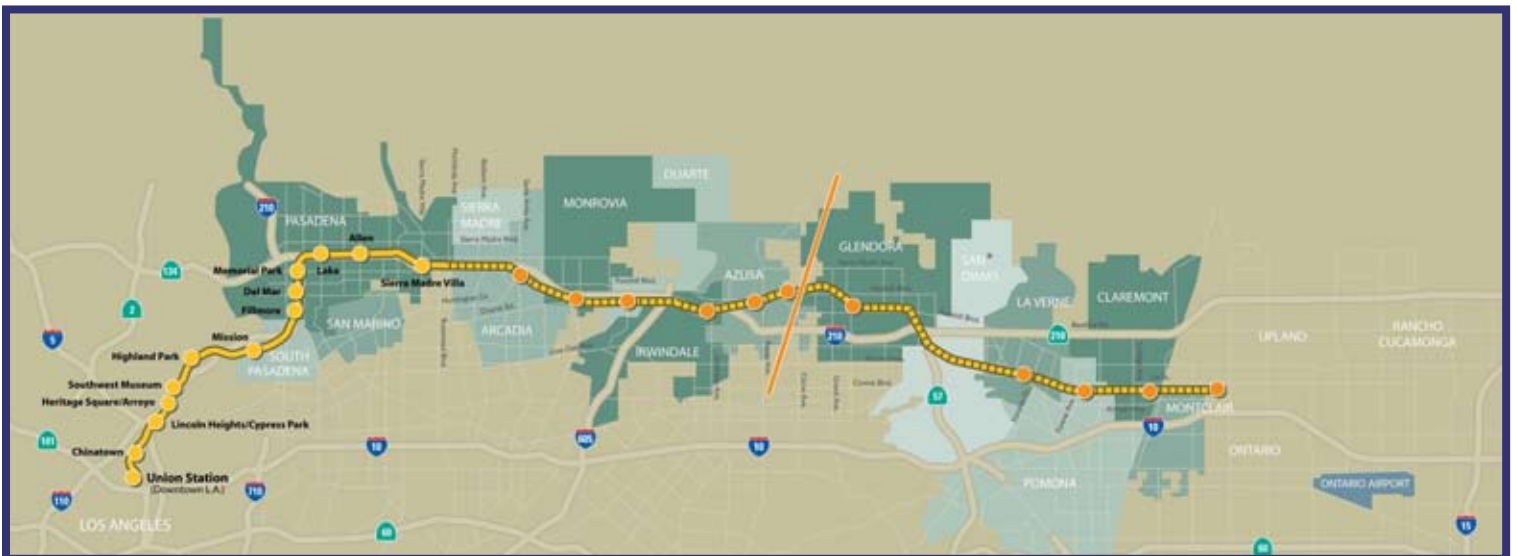
- Ability to implement and oversee the aggressive schedule of the Metro Gold Line Foothill Extension Project;
- Inspire staff through creativity and entrepreneurial efforts;
- Cultivate and foster innovative ideas; and
- Build positive, cooperative relationships within the organization and with the wide array of transportation agencies and community stakeholders.

Outstanding managerial skills

- Extensive knowledge of current trends and issues that affect and influence light rail construction management and related matters;
- Creative problem-solving capabilities with the ability to analyze and resolve complex and sensitive issues; and
- A proven track record of identifying and evaluating specific organizational needs.

A proven, effective communicator

- Excellent writing and verbal skills; the ability to clearly and honestly explain complex issues to a wide variety of individuals and groups; and
- The ability to be proactive in providing information to the Chief Executive Officer and others as appropriate.



Minimum Qualifications

Education – A Bachelor's or Master's degree in civil, mechanical, or transportation engineering is required. A California License as a Professional Engineer (PE) is desired but not required. A career history of progressive advancement to senior level rail construction engineering management positions in either the public or private sector is preferred.

Experience – This executive position requires at least five (5) years of successful top management experience as the director of engineering, project director or assistant project director of a light rail project, or equivalent position.

Compensation

The starting annual salary range for the Chief Project Officer is from \$146,913 to \$220,369. Placement within the stated range will be based upon the selected candidate's experience and salary history. In addition to a competitive salary, this position includes a California PERS retirement (with 100% vesting after five years) and an excellent executive benefits package. Further details on the benefits package can be obtained through Ralph Andersen & Associates.

The Selection Process

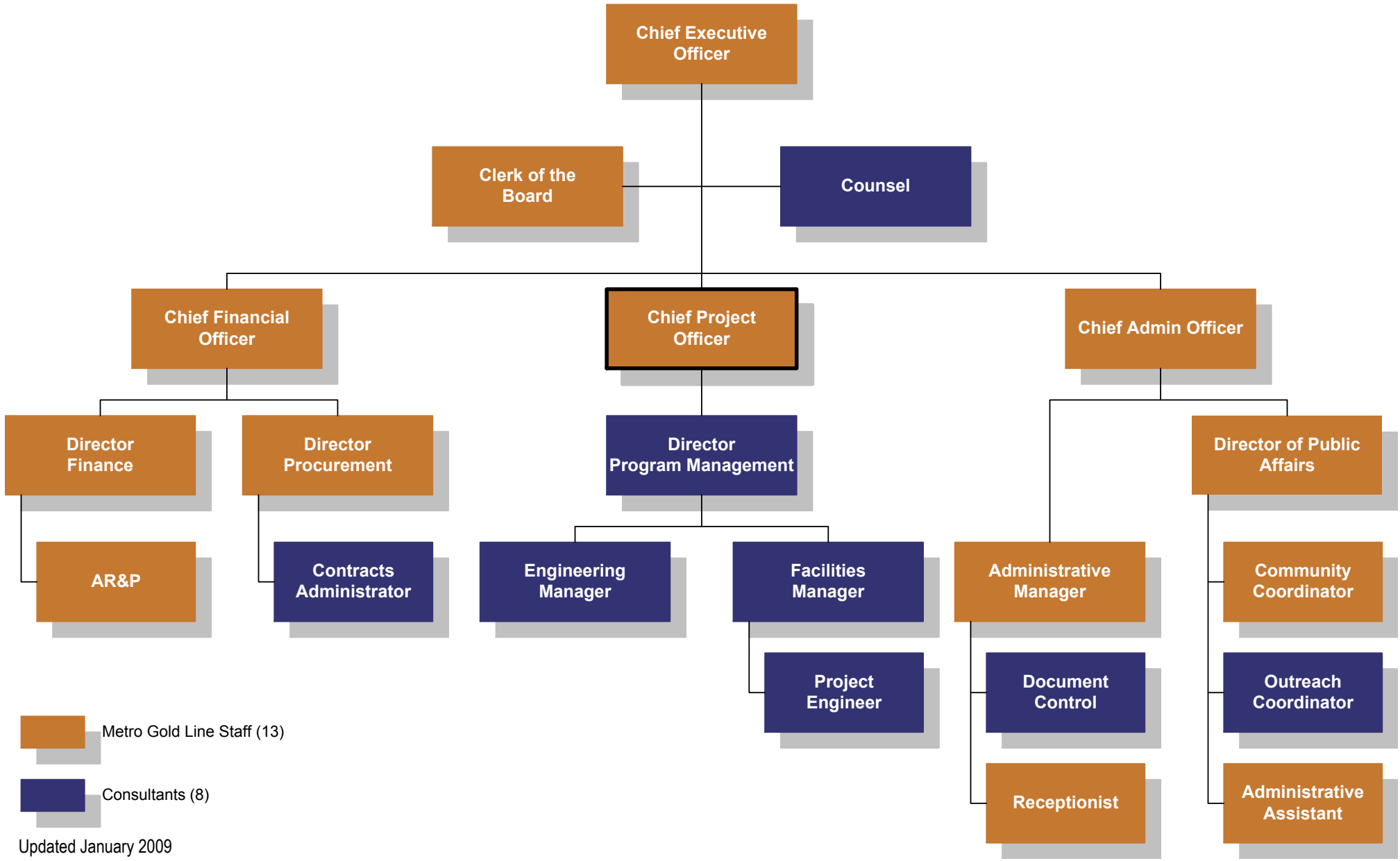
This position is open until filled; however, the first review of resumes will take place during late July 2009. To be considered, candidates must submit a compelling cover letter and resume; salary history; and six (6) professional references (should include two (2) supervisors, two (2) peers, and two (2) direct reports).


Interested candidates are strongly encouraged to apply electronically via email to apply@ralphandersen.com. References will not be contacted and education and employment history will not be verified until mutual interest has been established and a release form has been signed. Ralph Andersen & Associates will conduct the initial evaluation of submitted materials to determine the best overall match with the established criteria as outlined in this recruitment profile. Should you have any questions regarding this position or the recruitment process, please call Mr. Robert Burg at (916) 630-4900. Confidential inquiries are welcomed.

Metro Gold Line Foothill Extension Construction Authority is an equal opportunity employer.



Organizational Chart



 Metro Gold Line Staff (13)

 Consultants (8)

Updated January 2009

About the Foothill Extension

The proposed extension will continue the Metro Gold Line from its current terminus in East Pasadena through the Cities of Arcadia, Monrovia, Duarte, Irwindale, Azusa, Glendora, San Dimas, La Verne, Pomona, Claremont, and Montclair. A trip from Montclair to downtown Pasadena would take a little over 40 minutes, and further to Los Angeles would take approximately 75 minutes. It will offer shorter commuting trips, increased energy savings (estimated 1.5 million gallons of gasoline each year) and reduced levels of pollution (estimated 4 tons of carbon monoxide).

